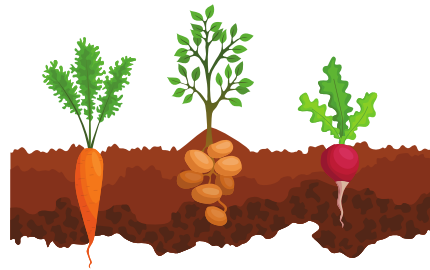


LOW FOOD PRODUCTION



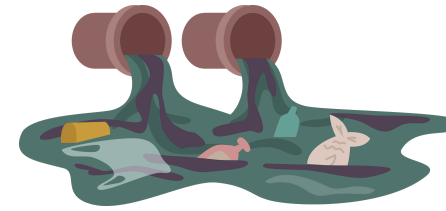
Drought in summer and flooding in winter is causing crop failure. Farmers are not producing food.

INCREASED HOUSE BUILDING



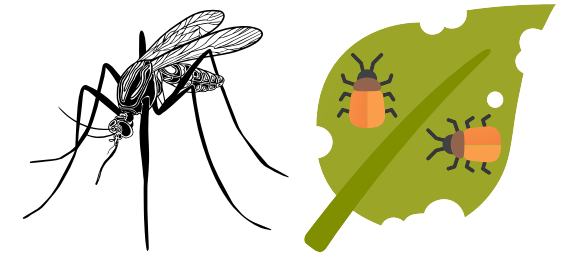
Houses built on land, taking up land for farming and wildlife.

RIVER POLLUTION



Sewage, runoff from farms and roads, plastic and waste pollution causing harm to people and wildlife.

INCREASE OF PEST SPECIES



Insect pests are damaging crops, killing off trees and plants and causing harm to humans.

FLOODING



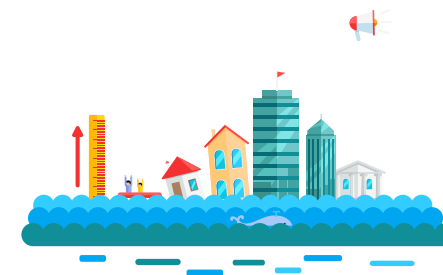
Heavy rainfall and river bursting banks causing flooding. Flooding homes farmland and damaging habitats.

AIR POLLUTION



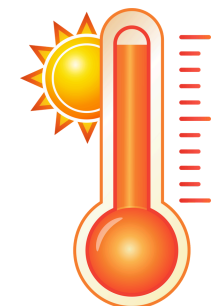
Air polluted with pollutants caused by increase of car and factory fumes, and rise of temperature. Causing harm to people & wildlife.

SEA LEVEL RISE



The sea level rises, causing coastal flooding, turning farmland into saltmarsh and erosion of the coastline.

RISING TEMPERATURES



Increase of temperature, people feeling unwell, lack of water, plants and crops dying and more wild fires damaging habitats.

DECREASE IN BIODIVERSITY



Animals and plants are in decline.

DROUGHT



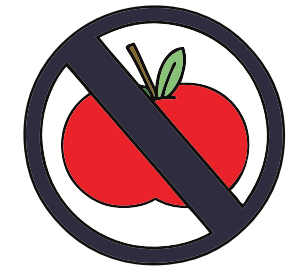
Hot temperatures and no rainfall causing ground to dry out, plants dying and no water in rivers and streams.

NO CONNECTIVITY BETWEEN HABITATS



Roads, buildings, railways and concreated areas stop animals from travelling between habitats.

WORLD FOOD SHORTAGE



Across the world, countries can't produce enough food to be transported to the UK. Shops are not stocking enough food like fruit and vegetables.

LITTER



Litter including plastic and metal being thrown on the ground. Causing harm to wildlife and polluting rivers, ponds and the sea.

TREES BEING CUT DOWN



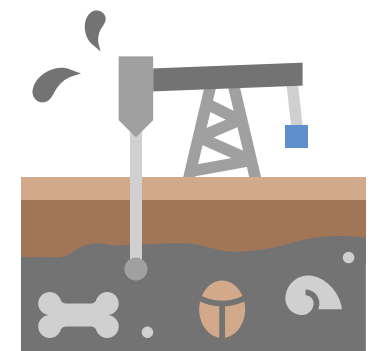
Trees being cut for more land to be used for farming and building houses.

FOOD WASTE



Lots of food waste and rubbish attracting pests. More food is wasted than can be produced.

USE OF FOSSIL FUELS



People using coal, oil and gas as fuel. Burning fossil fuels creates carbon dioxide gas causing climate change.